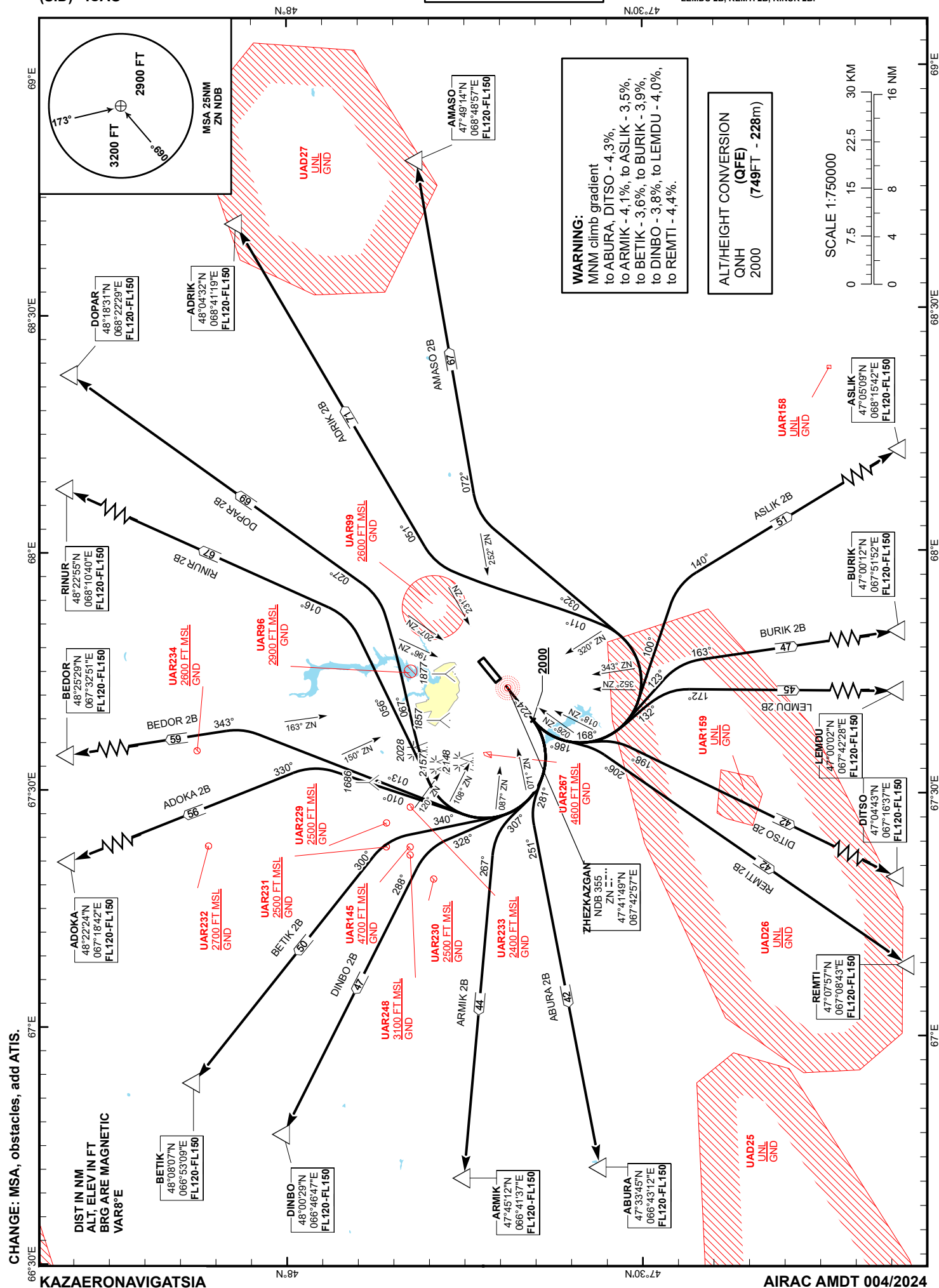


ZHEZKAZGAN TOWER 127.1
ZHEZKAZGAN ATIS (EN) 131.4
ZHEZKAZGAN ATIS (RU) 122.4

ABURA 2B, ADOKA 2B, ADRIK 2B,
AMASO 2B, ARMIK 2B, ASLIK 2B,
BEDOR 2B, BETIK 2B, BURIK 2B,
DINBO 2B, DITSO 2B, DOPAR 2B,
LEMDU 2B, REMTI 2B, RINUR 2B

ZHEZKAZGAN
RWY 22



STANDARD DEPARTURE ROUTES – INSTRUMENT (SID) ZHEZKAZGAN RWY 22	
RINUR 2B After take-off climb straight ahead to 2000 or above. Turn RIGHT on track 056° until intercept bearing 196°ZN, then proceed on track 016° to RINUR (N482255 E0681040). Cross RINUR at FL120 - FL150.	REMTI 2B After take-off climb straight ahead to 2000 or above. Turn LEFT on track 186° until intercept bearing 026°ZN, then proceed on track 206° to REMTI (N470757 E0670843). Cross REMTI at FL120 - FL150.
DOPAR 2B After take-off climb straight ahead to 2000 or above. Turn RIGHT on track 067° until intercept bearing 207°ZN, then proceed on track 027° to DOPAR (N481831 E0682229). Cross DOPAR at FL120 - FL150.	ABURA 2B After take-off climb straight ahead to 2000 or above. Turn RIGHT on track 281° until intercept bearing 071°ZN, then proceed on track 251° to ABURA (N473345 E0664312). Cross ABURA at FL120 - FL150.
ADRIK 2B After take-off climb straight ahead to 2000 or above. Turn LEFT on track 011° until intercept bearing 231°ZN, then proceed on track 051° to ADRIK (N480432 E0684119). Cross ADRIK at FL120 - FL150.	ARMIK 2B After take-off climb straight ahead to 2000 or above. Turn RIGHT on track 307° until intercept bearing 087°ZN, then proceed on track 267° to ARMIK (N474512 E0664137). Cross ARMIK at FL120 - FL150.
AMASO 2B After take-off climb straight ahead to 2000 or above. Turn LEFT on track 032° until intercept bearing 252°ZN, then proceed on track 072° to AMASO (N474914 E0684857). Cross AMASO at FL120 - FL150.	DINBO 2B After take-off climb straight ahead to 2000 or above. Turn RIGHT on track 328° until intercept bearing 108°ZN, then proceed on track 288° to DINBO (N480029 E0664647). Cross DINBO at FL120 - FL150.
ASLIK 2B After take-off climb straight ahead to 2000 or above. Turn LEFT on track 100° until intercept bearing 320°ZN, then proceed on track 140° to ASLIK (N470509 E0681542). Cross ASLIK at FL120 - FL150.	BETIK 2B After take-off climb straight ahead to 2000 or above. Turn RIGHT on track 340° until intercept bearing 120°ZN, then proceed on track 300° to BETIK (N480807 E0665309). Cross BETIK at FL120 - FL150.
BURIK 2B After take-off climb straight ahead to 2000 or above. Turn LEFT on track 123° until intercept bearing 343°ZN, then proceed on track 163° to BURIK (N470012 E0675152). Cross BURIK at FL120 - FL150.	ADOKA 2B After take-off climb straight ahead to 2000 or above. Turn RIGHT on track 010° until intercept bearing 150°ZN, then proceed on track 330° to ADOKA (N482224 E0671842). Cross ADOKA at FL120 - FL150.
LEMDU 2B After take-off climb straight ahead to 2000 or above. Turn LEFT on track 132° until intercept bearing 352°ZN, then proceed on track 172° to LEMDU (N470002 E0674228). Cross LEMDU at FL120 - FL150.	BEDOR 2B After take-off climb straight ahead to 2000 or above. Turn RIGHT on track 013° until intercept bearing 163°ZN, then proceed on track 343° to BEDOR (N482529 E0673251). Cross BEDOR at FL120 - FL150.
DITSO 2B After take-off climb straight ahead to 2000 or above. Turn LEFT on track 168° until intercept bearing 018°ZN, then proceed on track 198° to DITSO (N470443 E0671637). Cross DITSO at FL120 - FL150.	